

**Q1.**

Ranjit has six coins in his pocket.

If he picks **five** of the coins

the most he could pick is £4.60

the least he could pick is £2.70

How much money does he have altogether?

.....

.....

.....

.....

.....

.....

.....

.....

.....

.....

Answer £.....

**(Total 4 marks)**

**Q2.**

Alice makes cards.

Each card uses 42 cm of ribbon.

She has 1000 cm of ribbon.

(a) Work out the **maximum** number of cards she can make.

.....

.....  
.....

Answer .....

(2)

(b) How much ribbon will be left over?

.....

Answer ..... cm

(1)

(Total 3 marks)

**Q3.**

Liz buys a car for £7500

She pays a deposit of £1875

She pays the rest in 36 equal monthly payments.

Work out the amount of each monthly payment.

.....  
.....  
.....

Answer £.....

(Total 3 marks)

**Q4.**

A family uses 300 units of gas.

Each unit of gas costs 19p without VAT.

VAT of 5% is added to the bill.

Work out the total gas bill.

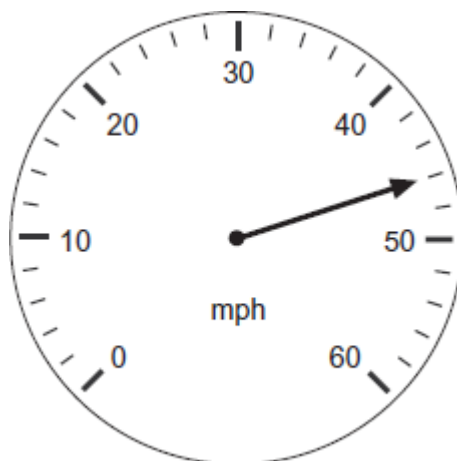
.....  
.....

.....  
.....  
.....  
.....

Answer £ .....

(Total 4 marks)

Q5.(a) Write down the speed shown on the speedometer.



Answer ..... mph

(1)

(b) A car travels for 1 hour 30 minutes at an average speed of 28 mph.

How many miles does the car travel?

.....  
.....  
.....

Answer ..... miles

(3)  
(Total 4 marks)

**Q6.** Write down a sensible unit to measure each of the following.

- (a) The amount a bus weighs.

Answer .....

(1)

- (b) The length of a fingernail.

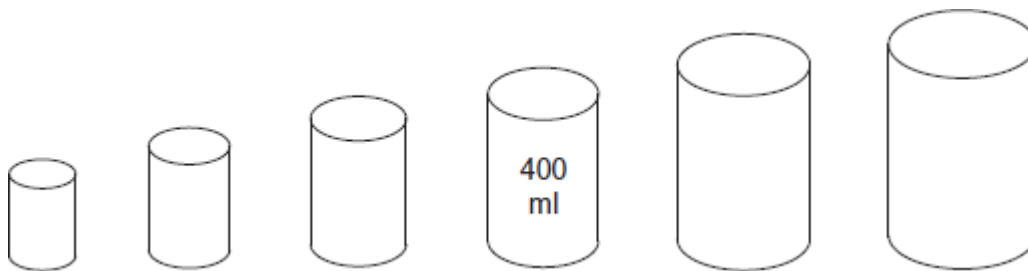
Answer .....

(1)

(Total 2 marks)

**Q7.** A company makes tins in six different sizes.

For each increase in size, the capacity of the tin **doubles**.



- (a) Work out the capacity of the smallest tin.

.....

Answer ..... ml

(2)

- (b) Work out the capacity of the largest tin.  
Give your answer in litres.

.....

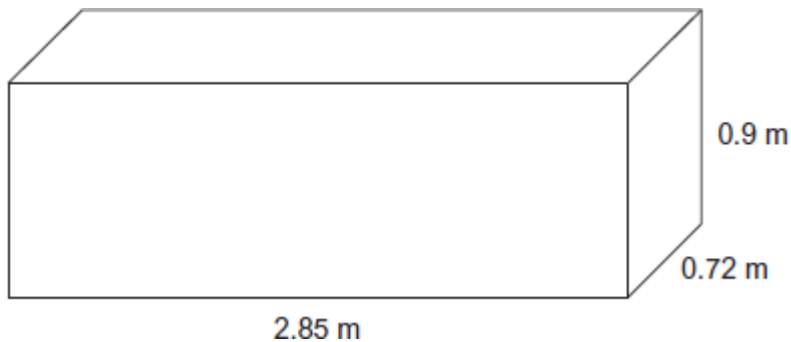
.....

Answer ..... litres

(2)

(Total 4 marks)

Q8.



Work out the volume of the cuboid.  
State the units of your answer.

.....

.....

.....

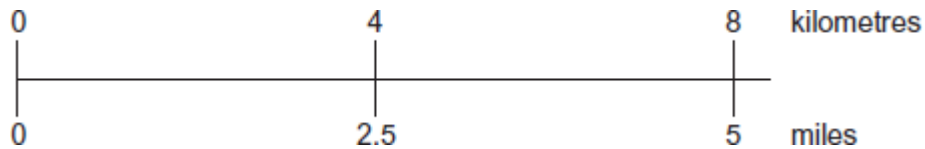
Answer .....

(Total 3 marks)

Q9. A car is travelling at 95 km/h  
The speed limit on the road is 60 mph

Is the car travelling below the speed limit?  
You **must** show your working.

You may use the conversion scale **below** to help you.



.....

.....

.....

.....

.....

.....  
 Answer .....

**(Total 3 marks)****Q10.**

A family lives in Killingworth.  
 They go to a water park by bus.

(a) Here is the bus timetable.

<b>Newcastle</b>	0915	0945	1015
<b>Killingworth</b>	0944	1014	1044
<b>Water park</b>	1018	1048	1118

(i) The family wants to arrive at the water park by 11 am.

Write down the time of the latest bus they can catch from Killingworth.

Answer .....

**(1)**

(ii) How long does their bus take from Killingworth to the water park?

.....

Answer ..... minutes

**(1)**

(b)

<b>Water park ticket prices</b>	
Adult	£ 12
Child	£ 10
Senior	£ 7

The family pays £ 61 for their tickets.  
 They buy at least one ticket of each type.

Work out the tickets they buy.

.....  
 .....  
 .....  
 .....

Adult .....

Child .....

Senior .....

(4)  
 (Total 6 marks)

**Q11.**A shop bought a box of pencils for £2.  
 There were 10 pencils in the box.

(a) How much did one pencil cost?

.....

Answer ..... pence

(1)

(b) The shop sold all the pencils for 25p each.

How much profit did the shop make?

.....  
 .....  
 .....

Answer ..... pence

(2)  
 (Total 3 marks)

**Q12.** The cost of hot drinks in a café is shown.

Coffee	£1.50
Tea	£1.25
Hot chocolate	£2.00

Tom buys two hot chocolates and one tea.

(a) How much does he pay?

.....  
.....  
.....

Answer £ .....

(2)

(b) He pays with a £10 note.

How much change should he get?

.....  
.....  
.....

Answer £ .....

(2)

(Total 4 marks)

**Q13.** A builder has a pipe that is 2 metres long.

He wants to cut lengths of 80 cm, 45 cm and 70 cm.

Does he have enough pipe?  
You **must** show your working.



.....

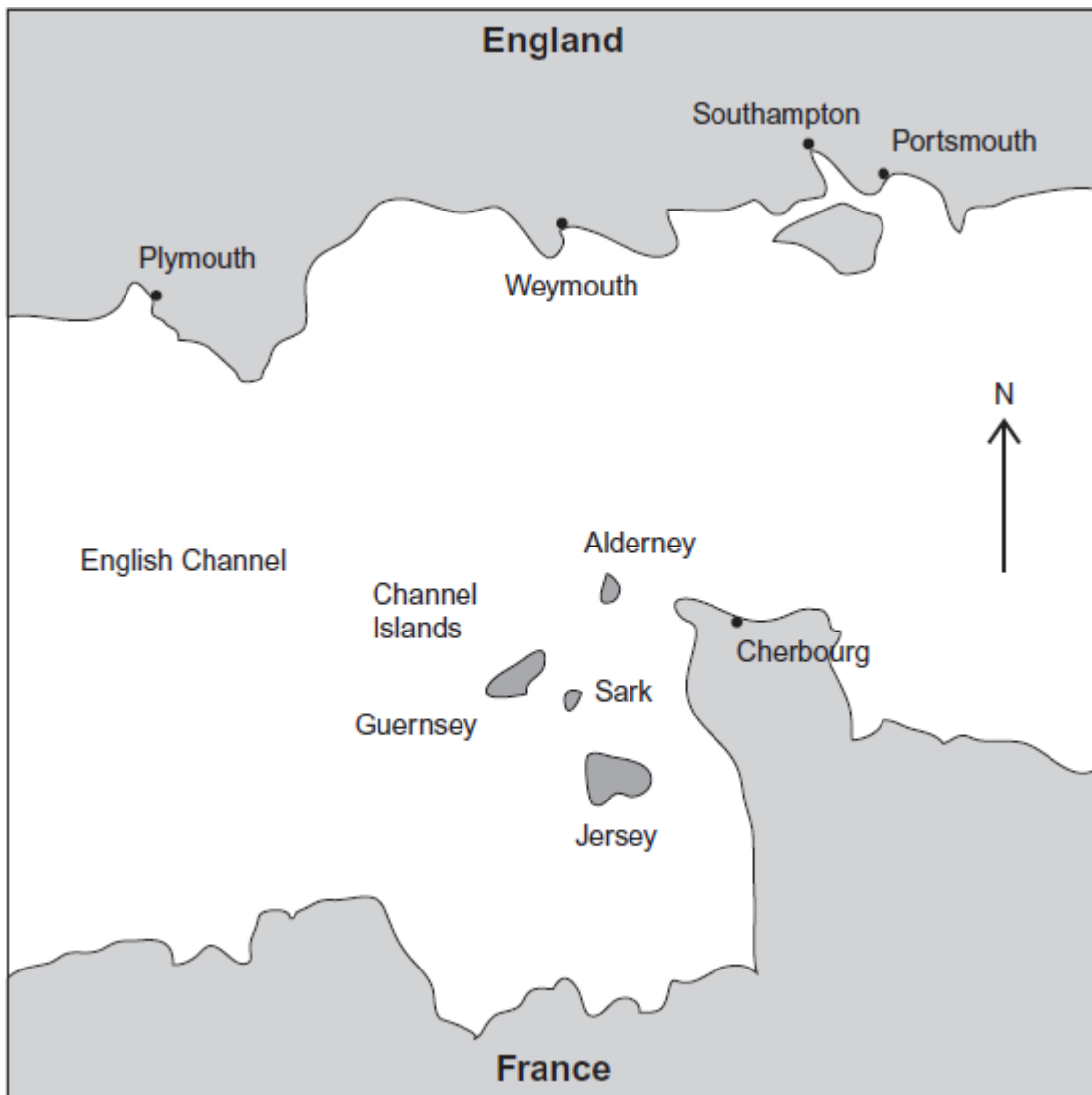
.....

.....

.....

(Total 3 marks)

Q14. Here is a map.



(a) Complete the sentence using one of these words.

North

South

East

West

France is ..... of England.

(1)

- (b) Which place **in England** on the map is North-West of Sark?  
Circle your answer.

Plymouth

Weymouth

Southampton

Portsmouth

(1)

- (c) Which of these Channel Islands is closest to Cherbourg?  
Circle your answer.

Guernsey

Sark

Jersey

Alderney

(1)

(Total 3 marks)

**Q15.** You are given  $2.2 \text{ pounds} = 1 \text{ kilogram}$   
 $1 \text{ kilogram} = 1000 \text{ grams}$

Matthew's grandmother asked him to buy  $\frac{1}{2}$  pound of cherries.

Cherries are sold in 100 g, 250 g and 500 g packs.

Which pack should he buy to get the nearest amount?  
You **must** show your working.

.....  
.....  
.....  
.....  
.....  
.....

Answer ..... g

**(Total 4 marks)**